

Tidbits

OCTOBER 2023

To continue receiving a hard copy of the Maui FCU newsletter, please contact us!



FOLLOW US ON SOCIAL MEDIA



Continuing our Celebration of 85 Years as Maui FCU!

INTERNATIONAL CREDIT UNION DAY 2023

On October 19, 2023, Maui FCU will join over 56,000 credit unions around the world to celebrate International Credit Union (ICU) Day®. This year marks the 75th anniversary of International Credit Union Day®.

Credit unions were built on the principle of "people helping people." We've seen that philosophy in action for more than 100 years, with credit unions providing access to affordable financial products and striving to meet the needs of under-served communities. Maui FCU is honored to be a part of this proud tradition.

For the month of October, we will be celebrating Member Appreciation Month! Open a new account or loan with us the month of October to receive a free gift. Visit us during the week of October 16th through October 20th for a free gift from us to celebrate ICU Day! We will also be giving out gifts to all our members who utilize our Western Union Services. Keep an eye out for our Keiki Coloring Contest. For more information, visit our website at mauifcu.com and follow our social media to join the fun!

Ho'okele Partnership Station¹

Maui FCU is open on Fridays and Saturdays at our partnership station inside of Aloha Pacific FCU. If a member service representative is not available, a representative at Aloha Pacific FCU can serve you, however, please have your member number* ready.

Visit the main branch for a Membership Card.

*This applies to Shared Branching locations.



¹This location does not offer all Maui FCU services. Full services are ONLY available at our Main Branch location.

Where to find your account number?

- Come into the main branch to receive an account info card.
- Check your statement for your account number.
- Find it on your check book below the signature line.



EMPLOYEE SPOTLIGHT

Congratulations Marvi and Gaya for your dedication and all your hard work! We look forward to the years to come.

MARVI CRUZ 20 YEARS WITH MAUI FCU



"Helping and interacting with members is what I enjoy the most working at Maui FCU. One of my favorite things here is working with my coworkers. In my career so far, I'm proud that I was part of the credit union's growth for 20 years."

It seems just like yesterday when Marvi joined the Maui FCU team as an MSR before we moved into our main branch at Wakea Avenue... We enjoy having Marvi on the team as much as she enjoys working here since she marked her 20-year anniversary on July 29th as our Senior MSR. She's usually helping members daily with their financial transactions and with their loans. Come by, say hello, and book a loan with her!

GAYA CABRERA 15 YEARS WITH MAUI FCU

"Working for more than a decade at the credit union is one of my highest achievements. I feel happy and content helping others and getting to know our members in our interactions."



Gaya initially worked for Kula Community FCU and joined the Maui FCU team as an MSR in 2014 when Kula Community FCU merged with us. We're lucky to have her on the team as she marked her 15-year anniversary on September 1st as an MSR II. She's usually helping members daily with their financial transactions at the main branch and at our Partnership Station at Aloha Pacific FCU on Fridays and Saturdays.

\$25 FOR YOU, \$25 FOR YOUR FRIEND!

Share the love for Maui FCU for cash rewards! Earn \$25 for you and up to \$25 for your friends and family when they join Maui FCU.

Share the **BENEFITS OF MEMBERSHIP**

- **LOW RATES** on Loans
- **HIGHER** Dividends on Savings & Certificates
- **EXCELLENT** Member Service



This program is our way of thanking our members for referring friends, family, and colleagues to Maui FCU.

If you are a Maui FCU member, you will receive a \$25.00 bonus for each friend, family member, and/or colleague you refer who joins the credit union. You can receive a bonus for up to 12 referrals each calendar year (totaling up to \$300 per year).

New members who join as part of this program can receive a \$25.00 bonus. Member Referral Program participants must meet the qualification requirements for Maui FCU membership. Program details may change at any time without notice.

Visit our website, www.mauifcu.com, for more information about how to qualify to earn \$25 for you and your friends.

¹Certain Conditions Apply! Check eligibility. The minimum balance required to open a Share account is \$25.00 and a \$1.00 membership fee. A valid form of identification (i.e., Hawaii Driver's License, Passport, or Military I.D.) is required. ²Maui FCU reserves the right to discontinue the program at any time without prior notice. To receive the incentive described, the person being referred must: be referred by an existing Maui FCU member AND the referred friend/family must not be a current Maui FCU member or have had a Maui FCU account closed within the last 12 months.

Refer. Earn. Repeat.

Double Your Treats, Double Your Cash Back November 1 - December 31, 2023



Earn **double** cash back on all your holiday purchases using your Maui FCU Platinum Visa Credit Card

CREDIT UNIONS OF MAUI 8TH ANNUAL CHARITY GOLF TOURNAMENT



The Credit Unions of Maui planned to hold its 8th annual Golf Tournament to benefit Hospice Maui on August 12, 2023. In consideration of recent events, the Tournament was cancelled, and in partnership with Hospice Maui, it was decided that the funds raised would have the greatest impact supporting the Credit Unions of Maui Wildfire Relief Fund, which has been providing essential resources to our members and those who have been impacted by the Maui wildfires. Mahalo to the generous sponsors, donors, and golfers who helped raise \$38,000.

CONTACTLESS VISA CREDIT CARD & MAUI FCU CREDIT CARD MOBILE APP

Take care of daily purchases, unexpected expenses or self-splurging, with a Maui FCU Visa Platinum Credit Card.¹



Credit Card Benefits

- Contactless. Fast, safe and secure.
- Monitor your transactions, view eStatements, and easily make card payments with the Maui FCU Credit Card Mobile App.
- Low Introductory Interest Rate!¹



Download the Maui FCU Credit Card App today and easily manage your account on the go.



¹All loans are subject to credit approval. Certain terms and conditions may apply. Rates may vary depending on credit history and underwriting factors. All loan programs, rates, terms and conditions are subject to change at any time without notice. For more information, please contact a loan specialist at 808.873.5050. Membership Required.



KEEP YOUR REWARDS CARD TOP OF WALLET FOR A **CHANCE TO WIN \$5,000** TO USE AS YOU PLEASE.

Simply use your rewards card on everyday purchases a minimum of four times per week in order to qualify for the drawings.

Visit cugivebackssweepstakes.com.

No purchase, entry fee, credit or debit card usage of any kind necessary to enter or win. Open to Rewards Program cardholders, who are 18+ & legal residents of 50US/DC/PR. Sweepstakes ends 10/29/2023. Void Where Prohibited. *Subject to Official Rules with alternate no purchase method of entry details. cugivebackssweepstakes.com

NOMINATIONS FOR BOARD OF DIRECTORS:

Nominating Committee Chairperson, Beverly Kurokawa has announced the following individual as their nominee for the one (2) vacancies on the Board of Directors for 2024.

NOMINEES:

Jodi Arisumi, Director

Jodi Arisumi has been a member of the Board since April 2015. She has a Masters in Human Resources Management, B.B.A. in Human Resources and Finance. She is currently employed as a HR & Payroll Manager at Maui Oil Company. She also serves on the SHRM Hawaii Maui District Educational Foundation Board.

Doug Schenk, Secretary

Doug Schenk is a graduate of the University of Hawaii at Manoa in Agriculture. He is a former Chairman of the Board of Maui Gold Pineapple Company and was the former President of Maui Pineapple Company, Ltd. Doug has served on our board since 1990. He previously served as a Board of Director for the State of Hawaii Agribusiness Development Corporation.

Members interested in serving as a Board Director may submit their nomination by petition signed by at least 1% (71 members) of membership. Please contact the credit union for further guidelines and minimum requirements. All nominees must agree to an investigative background check which includes criminal, civil and credit checks. All nominations with the minimum petition signatures must be received by Friday, November 24, 2023 by 4:30 p.m. at the credit union office at 107 E. Wakea Avenue, Kahului, HI 96732. Contact the credit union for a copy of the entire minimum requirements. Election will be conducted by vote of members at the Annual Meeting.

Switch to eStatements



- VIEW ANYTIME**
 Access your statements whenever you like, from wherever you are.
- AVAILABLE SOONER**
 Receive your statements on the 1st day of each month.
- IT'S FREE!**
 Signing up for eStatements is free and simple to do!

BANK WITH US. ANYWHERE.

Take advantage of our electronic banking options that allows you to do your banking when you're on the go and *debit card management* all on ONE platform.

Download the Maui FCU Mobile App today and enjoy the benefits!

Contact Us for More Information



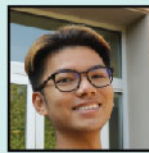
2023 HIGHER EDUCATION Scholarship Recipients

A total of five (5) members of Maui Federal Credit Union were awarded a \$1,000 scholarship to help them pursue a higher education. Kaleo Gallen was named our 5th recipient. Again, congratulations to all our 2023 Higher Education Scholarship recipients.

Kaleo IteI Gallen

Kinesiology, Pacific University Oregon

"My father immigrated to Maui in 1991 for work and a better life. He found a job with Maui Gold Pineapple Company within a year. Maui FCU was established back in 1938 as a credit union for the employees of Maui Pineapple. Working with the company he started banking with Maui FCU. The experiences my father would share were all positive. The transition of life my father went through to adapt to the life he lives now wasn't an easy one. Language barriers, social norms, and culture shocks. Maui FCU's team provided the help my father needed to adjust to his new environment. Maui FCU being a financial service to the employees of the Maui Pineapple Company, has had a historically rich tie with my family."

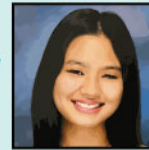


Jayson Tagala

Civil Engineering, University of Portland

Taelor Ferrer

Elementary Education, UH Manoa



Rheannon Sardinha

Hospitality Management, University of Las Vegas

Riann Europa Delos Santos

Dental, UH Maui



We wish you the best in all your future endeavors!

ANNUAL FOOD and FUNDS DRIVE



Mahalo to everyone who supported the Credit Unions of Maui Food and Funds Drive benefiting the Maui Food Bank. Collectively, we raised over \$14,000 in funds and we were also able to collect nonperishable food items. Mahalo again for a successful food and funds drive. Together, we are able to make a difference.

KEEP US CURRENT ON YOUR CELL PHONE, EMAIL, AND PHYSICAL/MAILING ADDRESS INFO

Don't miss out on what's new at Maui FCU and keep your contact information current. We are making it even more convenient to keep your contact information up to date. You can also easily update your address online through Online Banking. Simply log in and click on "Settings" located on the top right of the screen and select "Profile" from the drop-down menu. Otherwise, you can use the form located on our website. On the Home page click "Services" and then "Forms". You may turn in the Change of Address form at your nearest branch location. Please note that this form must be notarized if it is not signed in the presence of a Maui Federal Credit Union member service representative.



HAWAIIAN AIRLINES AFFILIATE PROGRAM

Maui FCU has joined Hawaiian Airlines' Preferred Affiliate program! This web-based program offers members of Maui FCU the following travel benefits:



- 5% off the lowest available HawaiianAirlines.com web fares on both business and leisure travel to the mainland.
- Convenient on-line booking with a variety of fare and itinerary options.
- You will still be able to earn flight credit in your individual HawaiianMiles account for flying Hawaiian Airlines.

So when planning that next vacation or business trip to the mainland, remember to book online at HawaiianAirlines.com/Affiliate and take advantage of all the benefits this program has to offer. **In order to receive these benefits you must enter our Preferred Affiliate Program Code which is MFCU.**

Maui FCU Members Save an Average of \$414* a Year on Auto Insurance



As a Maui FCU member, here's why you should switch to Farmers Insurance Hawaii:

- Special affinity group discount for Maui FCU members
- Additional discounts for being claims-free, a homeowner and multi-policyholder
- Save even more with our Paperless, Full Pay, and Early Shopper Discounts
- Homeowners, renters, hurricane, flood, or dwelling fire insurance policies
- Local sales assistance with local agents
- Online and Mobile App policy servicing

Call the special Maui FCU line at 800-511-0965

Keycode: 6MQTRP

www.farmershawaii.com/MauiFCU



*Average savings from information provided by new policyholders from 11/01/21 to 11/01/22, which showed that they saved by switching to Farmers Hawaii. Insurance underwritten by 21st Century Centennial Insurance Company.

Follow Us On

2023 HOLIDAY CLOSINGS

- | | |
|---|--|
| Columbus Day
Monday, October 9 | Thanksgiving Day
Thursday, November 23 |
| Veterans Day
Friday, November 10 | Christmas Day
Monday, December 25 |
| New Years Day
Monday, January 1, 2024 | |

Wishing You & Your Loved Ones
Happy Holidays!

MEMBER PERKS

Enjoy secure and convenient transactions with Maui FCU* - the only Western Union financial affiliate on Maui! Stop by our Main Branch.

Sending money to your loved ones this season? Maui FCU members are able to send money through Western Union at the main branch. It's one of many services we provide for our members. Call 808.873.5050 or visit our website at mauifcu.com to learn more!

*Terms and Conditions Apply. Must be a Maui FCU member.



MAIN BRANCH
107 East Wakea Avenue
Kahului, Maui HI 96732
PH 808.873.5050 • **FAX** 808.873.6211

OFFICE HOURS
Monday – Thursday • 8:30 am - 4:30 pm
Friday • 8:30 am - 5:30 pm

HO'OKELE PARTNERSHIP STATION

at Pu'unene Shopping Center
(Located inside Aloha Pacific Federal Credit Union)
70 Ho'okele Street, Suite 1210
Kahului, HI 96732
PH 808.866.5295
OFFICE HOURS
Friday • 9 am - 5 pm
Saturday • 9 am - 1 pm

New Hours!

HANA BRANCH
Temporary Location
5670 Hana Hwy.
Hana, Maui HI 96713
PH 808.248.8307 • **FAX** 808.248.7645

OFFICE HOURS
Monday, Wednesday, Friday
9 am - 12 pm • 2 pm - 4 pm

24 HOUR AUDIO RESPONSE
1.800.399.4790

ROUTING NUMBER
321379724

BOARD OF DIRECTORS
Wesley Nohara • Chairman
Beverly Kurokawa • Vice-Chairman
Doug Schenk • Secretary
Clayton Fuchigami • Treasurer
Jodi Arisumi • Director

SUPERVISORY COMMITTEE
Stacey Jio • Chairman
Elli Funakoshi • Member
Madelyn Bumanglag • Member
Pauline Tiu • Member

Maui FCU may terminate, modify or change any program, service or fee without prior notice. Maui FCU makes an attempt to verify the accuracy of this newsletter. However, due to the "human" element, errors or omissions may occur. If they do, the actual correct rate, fee, conditions or terms of service or program will apply.

Membership eligibility and membership required to benefit from our programs and services



15053-NEWS-1023